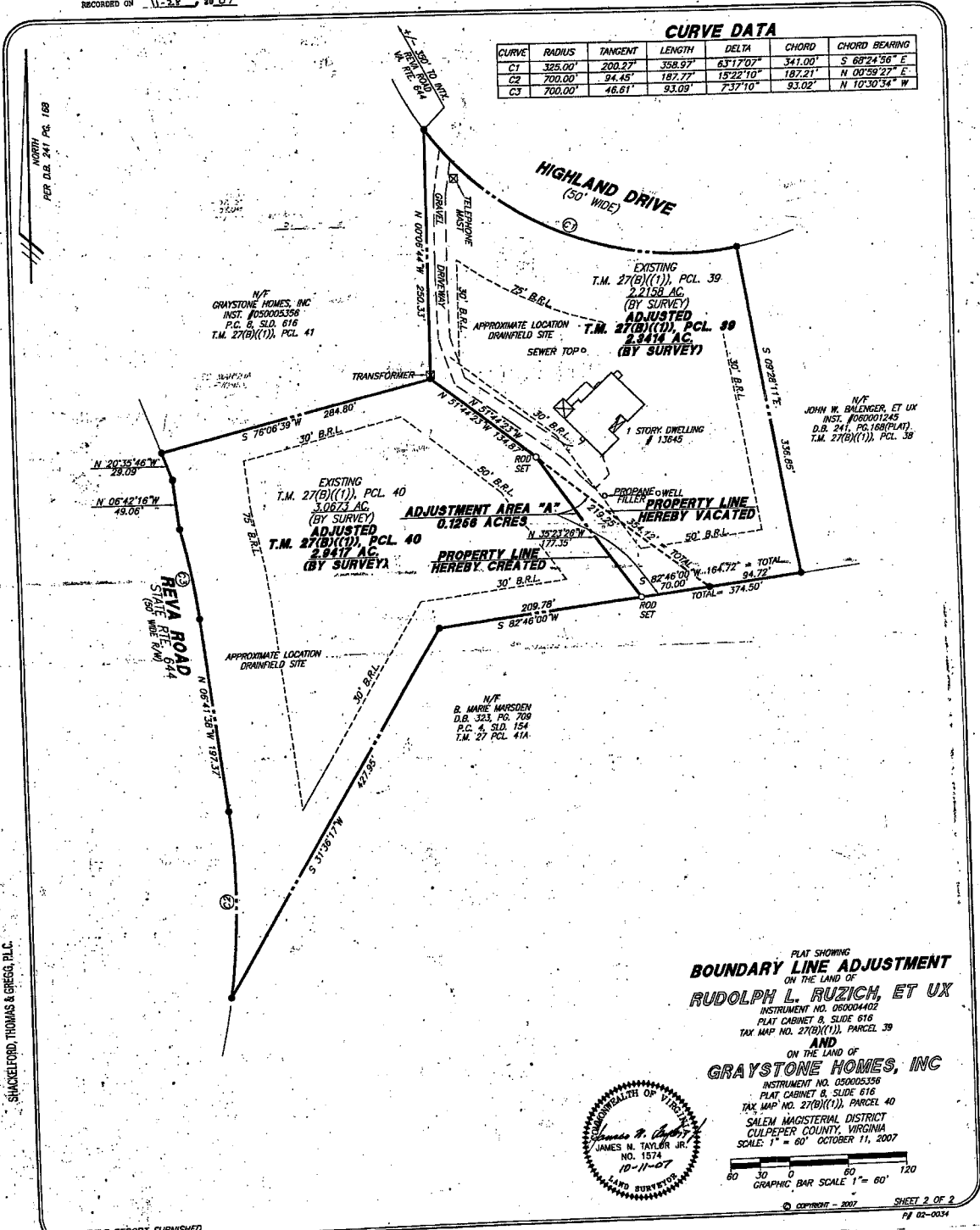


PLAT PAGE 2, PAGE 717  
 INSTRUMENT # 070004506  
 RECORDED ON 11-28, 2007

CURVE	RADIUS	TANGENT	LENGTH	DELTA	CHORD	CHORD BEARING
C1	325.00'	200.27'	358.97'	63°17'07"	341.00'	S 68°24'56" E
C2	700.00'	94.45'	187.77'	15°22'10"	187.21'	N 00°59'27" E
C3	700.00'	46.61'	93.09'	7°37'10"	93.02'	N 10°30'34" W

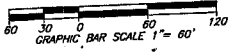
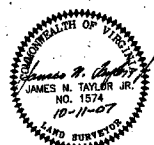


PLAT SHOWING  
**BOUNDARY LINE ADJUSTMENT**  
 ON THE LAND OF  
**RUDOLPH L. RUZICH, ET UX**

INSTRUMENT NO. 060004402  
 PLAT CABINET 8, SLIDE 616  
 TAX MAP NO. 27(B)(1), PARCEL 39

AND  
 ON THE LAND OF  
**GRAYSTONE HOMES, INC**

INSTRUMENT NO. 050005356  
 PLAT CABINET 8, SLIDE 616  
 TAX MAP NO. 27(B)(1), PARCEL 40  
 SALEM MAGISTERIAL DISTRICT  
 CULPEPER COUNTY, VIRGINIA  
 SCALE: 1" = 60' OCTOBER 11, 2007



NO TITLE REPORT FURNISHED  
 SEVEN SPRINGS LOT 39-BLAIRMO



101 WEST LOCUST STREET, SUITE 201  
 CULPEPER, VIRGINIA 22701  
 PHONE (540) 825-0238